

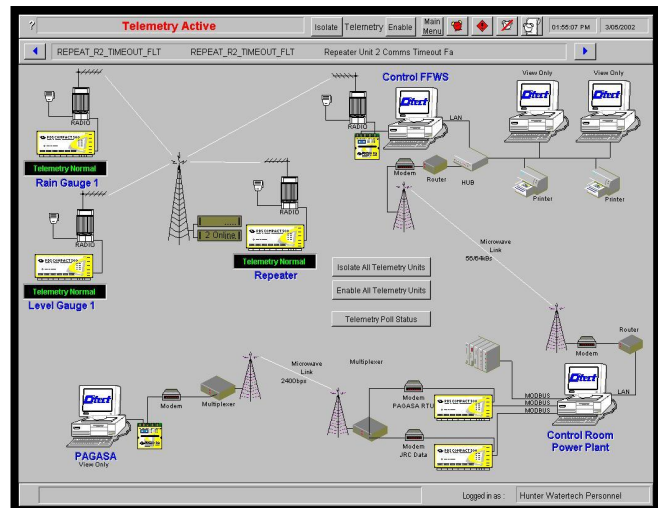
flood warning and dam control

San Roque power plant

Philippines

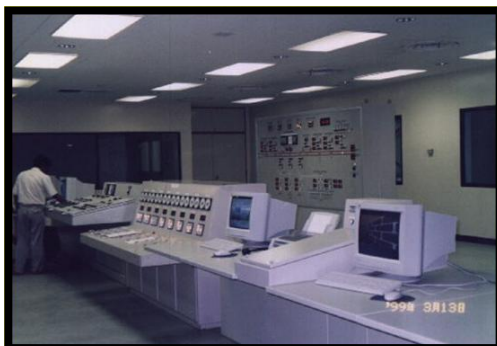
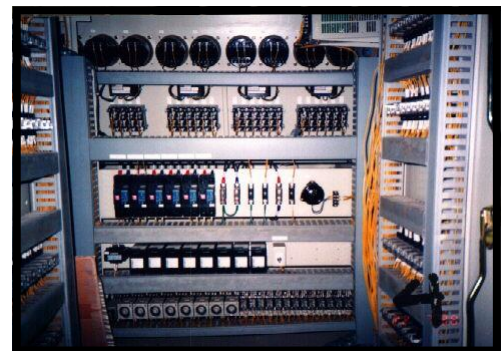
project summary

Stage 1 of the San Roque Flood Warning System was completed in June 2002. The system includes rain-fall and water level gauging stations linked back to a central control system (located at the San Roque Power Station) by both VHF radio telemetry and micro-wave link from the existing JRC system of water level and rainfall gauging stations at the nearby Binga Dam. Data from the system is essential for early food warning and inflow forecasting



project features

- Network of river level and climate monitoring stations
- VHF telemetry to base station
- Microwave link from existing JRC system to Binga Dam
- Automatic data transfer to 3 government control stations off site via TCP/IP
- Control of spillway gates and discharge calculations



tyco / Flow Control / **Environmental Systems**

